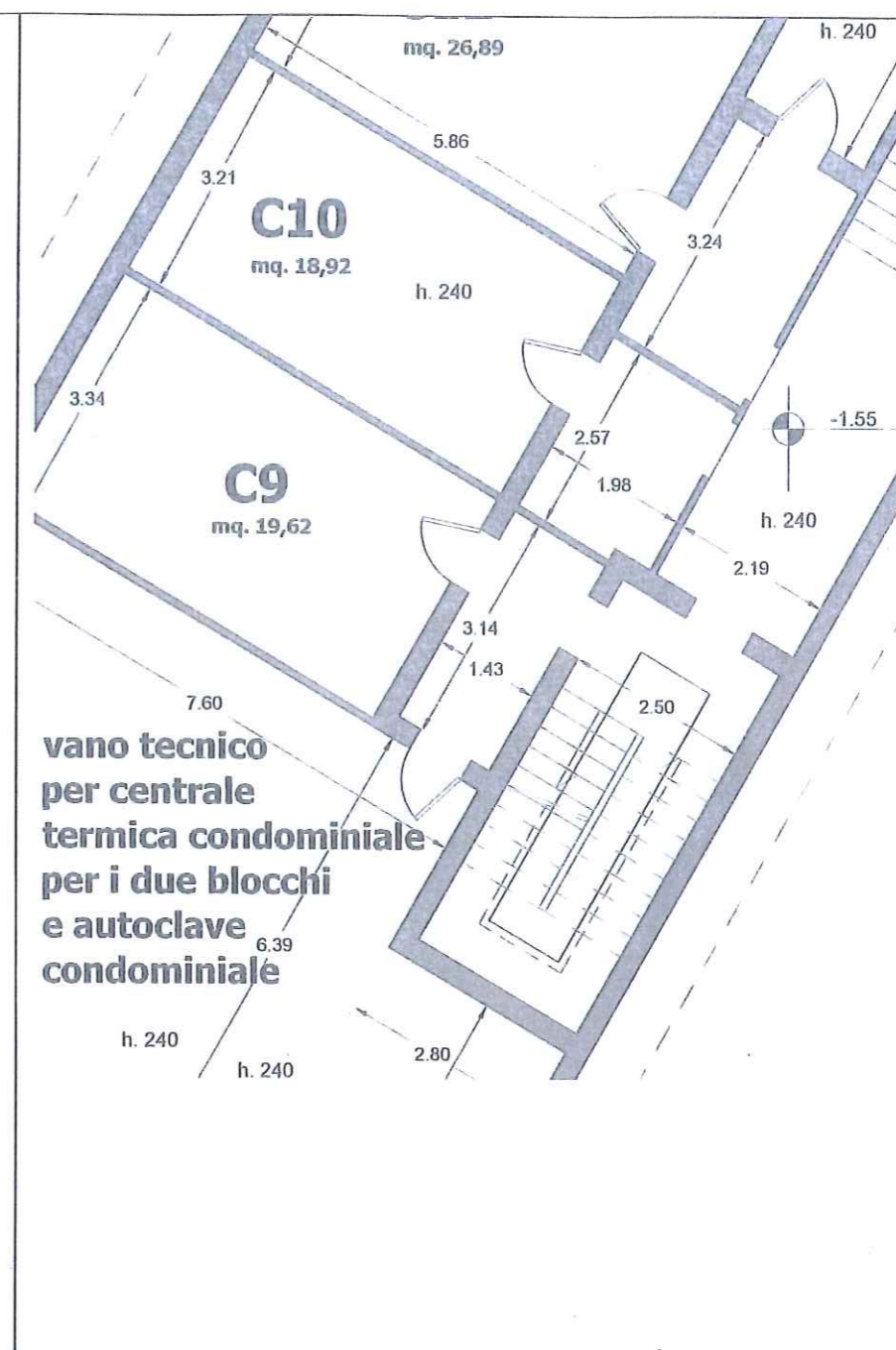
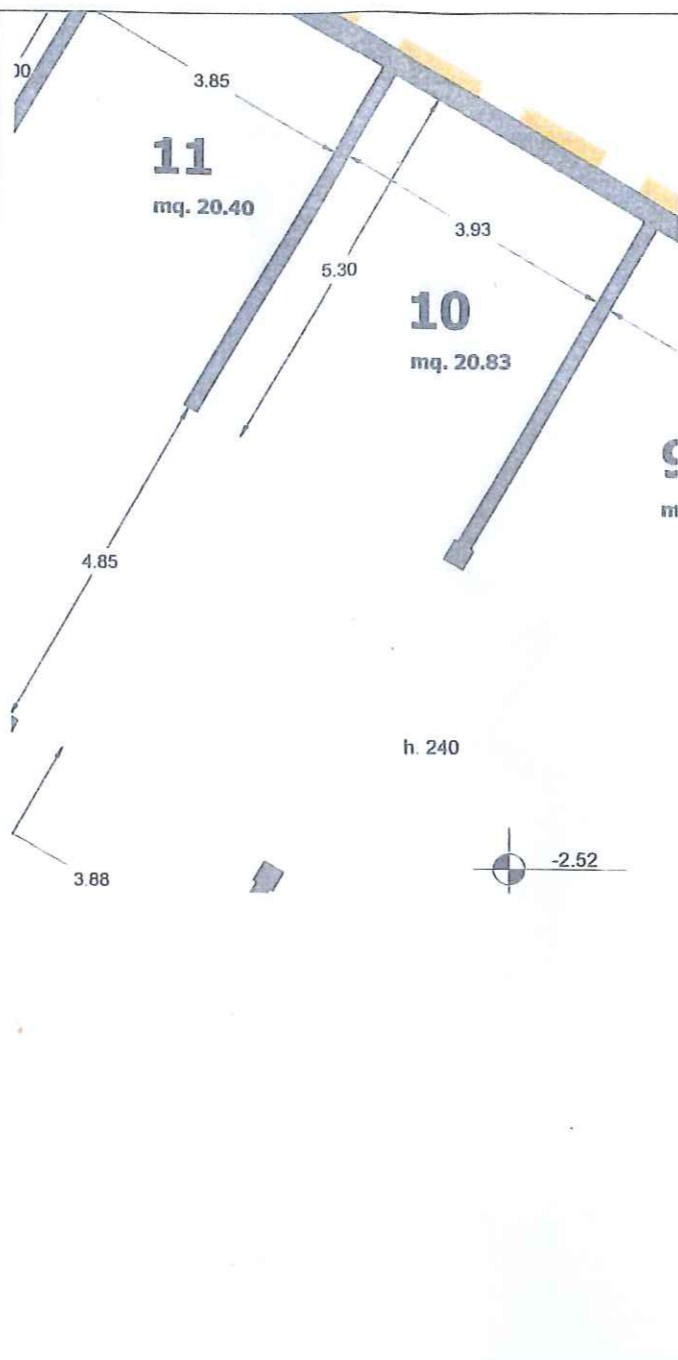
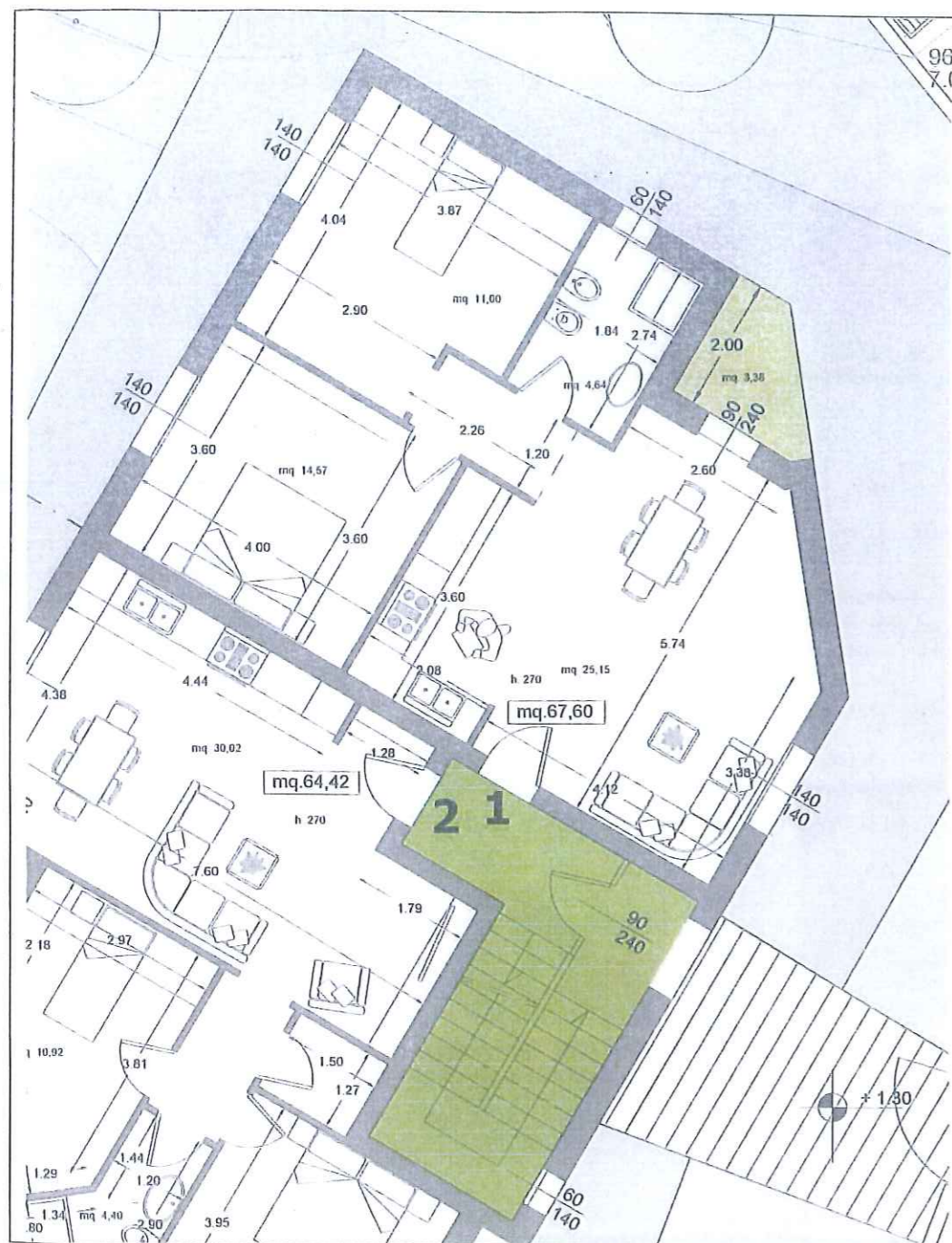


APPARTAMENTO 1

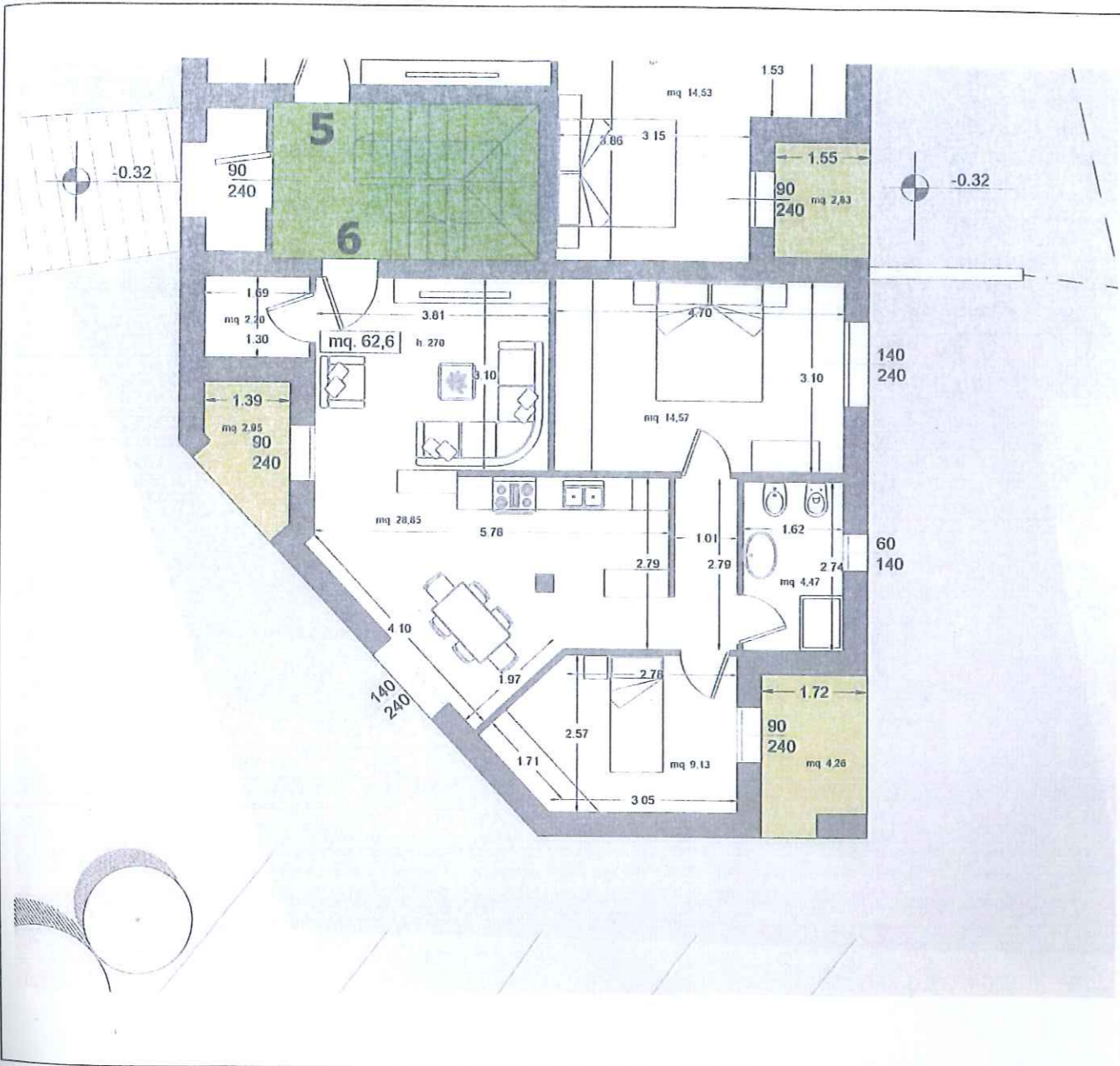
GARAGE 10

CANTINA C10

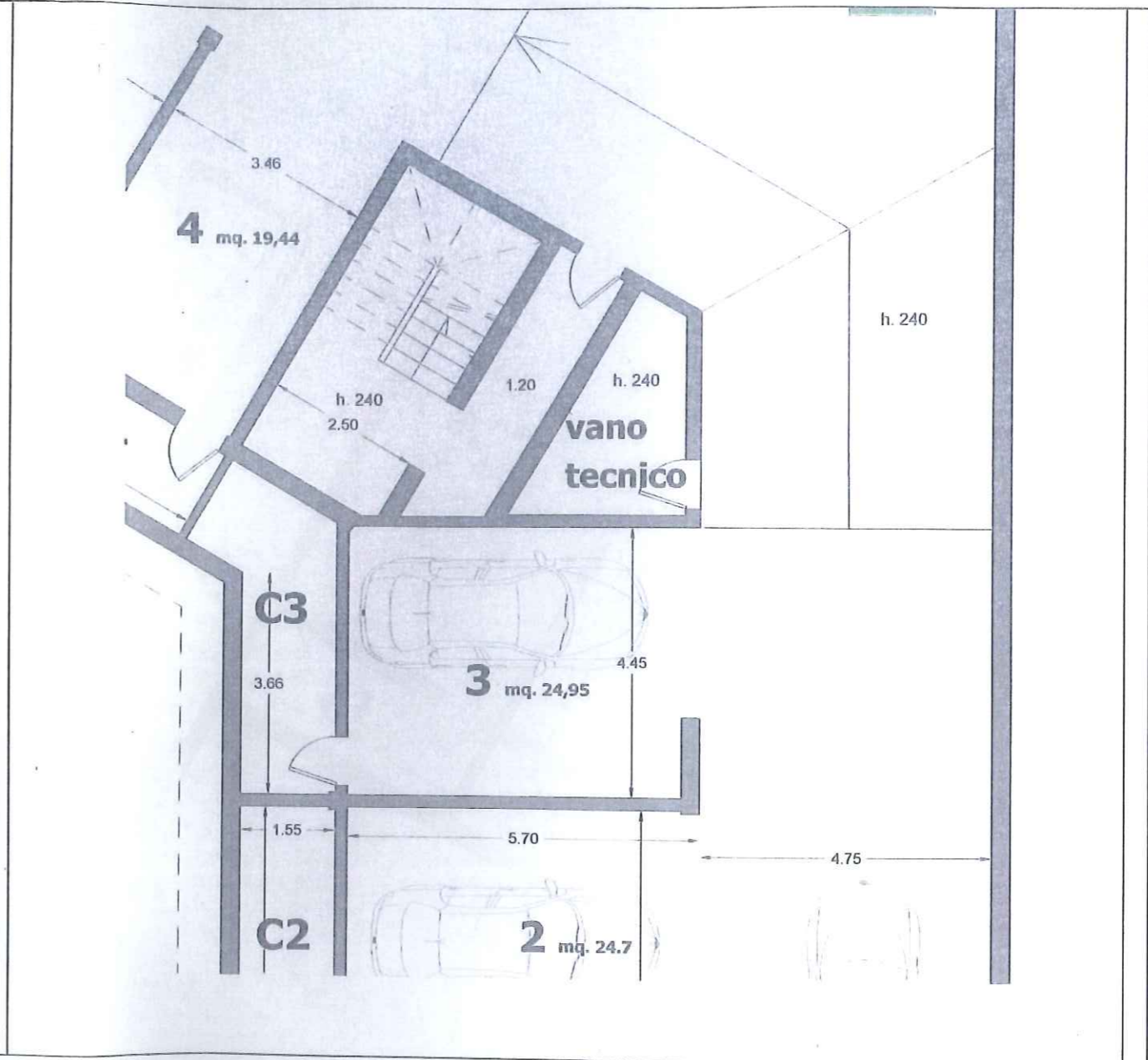


Superficie netta appartamento	67,60 mq
Logge	3,38 mq
Garage 10	20,83 mq
Giardino	260,00 mq
Cantina 10	18,92 mq

APPARTAMENTO 6



GARAGE 3 e CANTINA C3

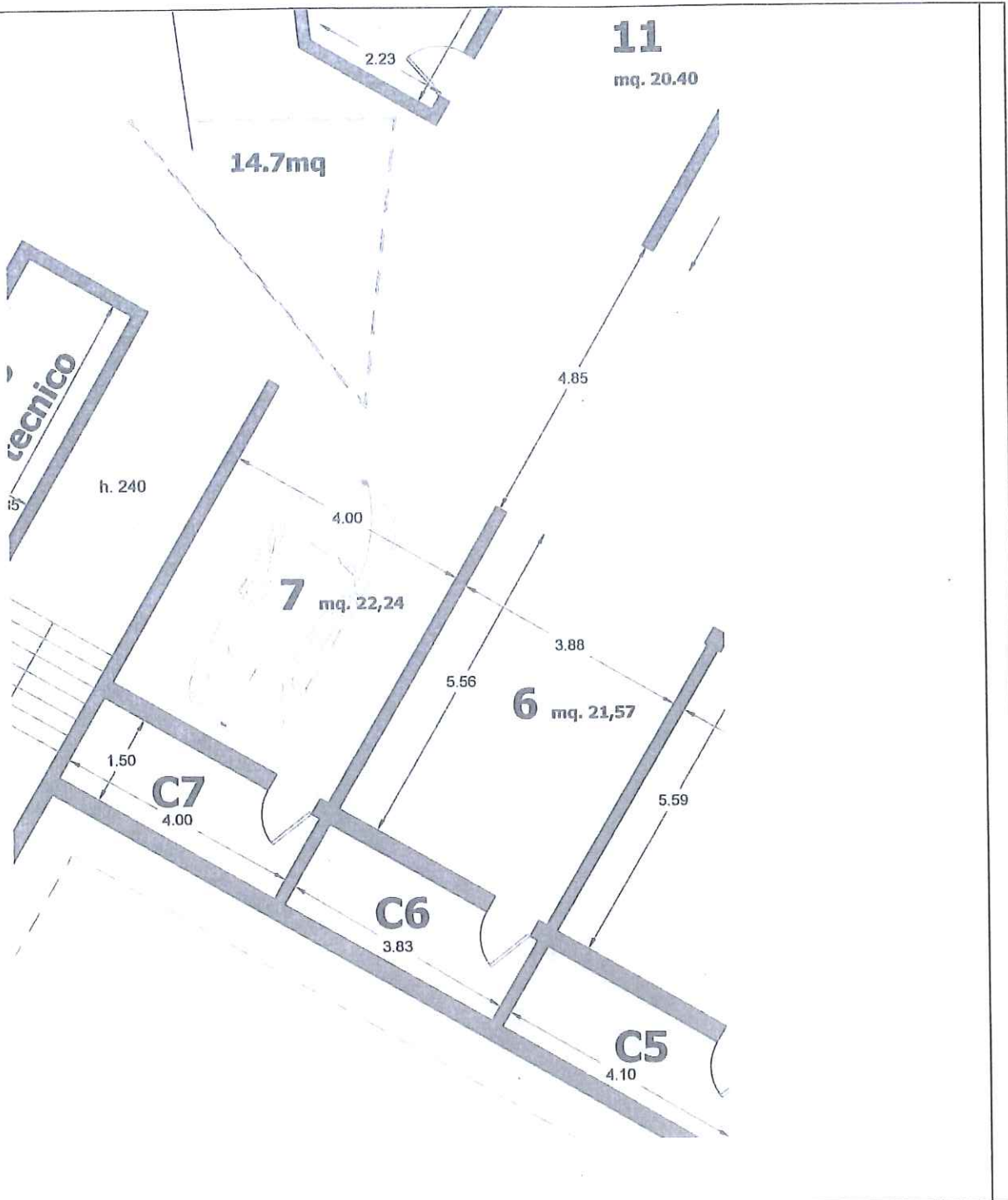


Superficie netta appartamento	62,60 mq
Logge	7,21 mq
Garage 3	24,95 mq
Giardino	996,60 mq
Cantina 3	8,61 mq

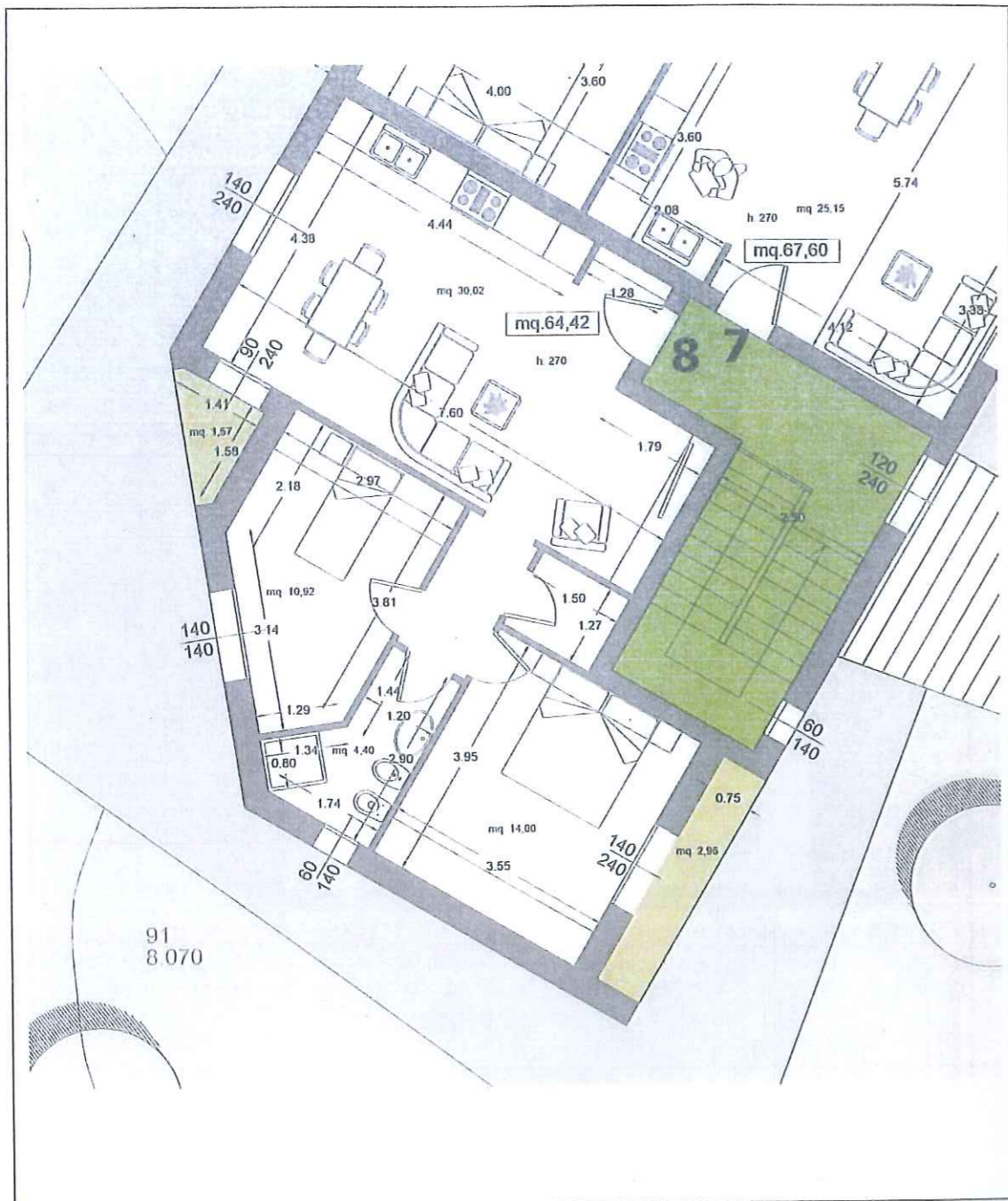
GARAGE 7

e

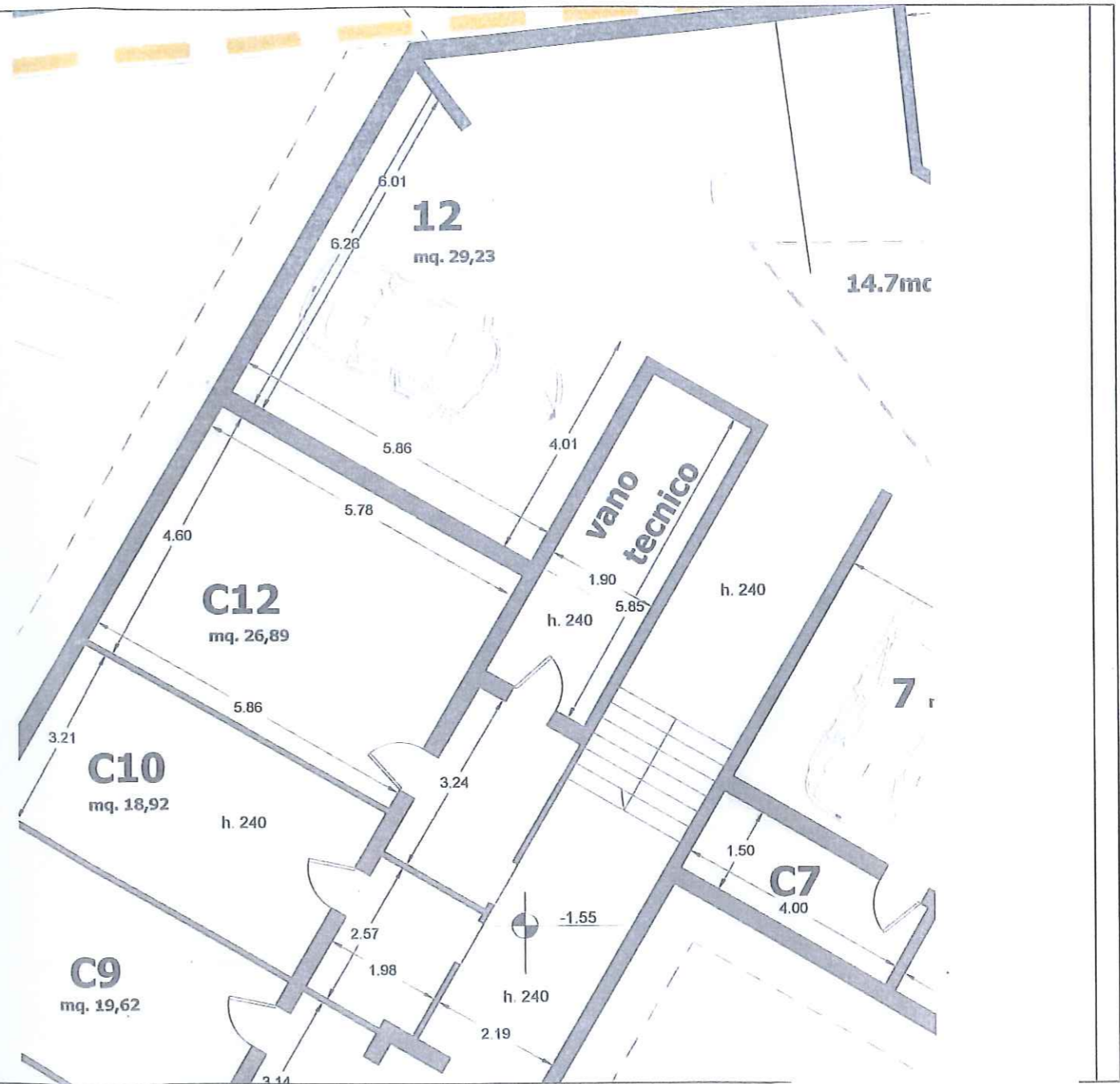
CANTINA C7



APPARTAMENTO 8

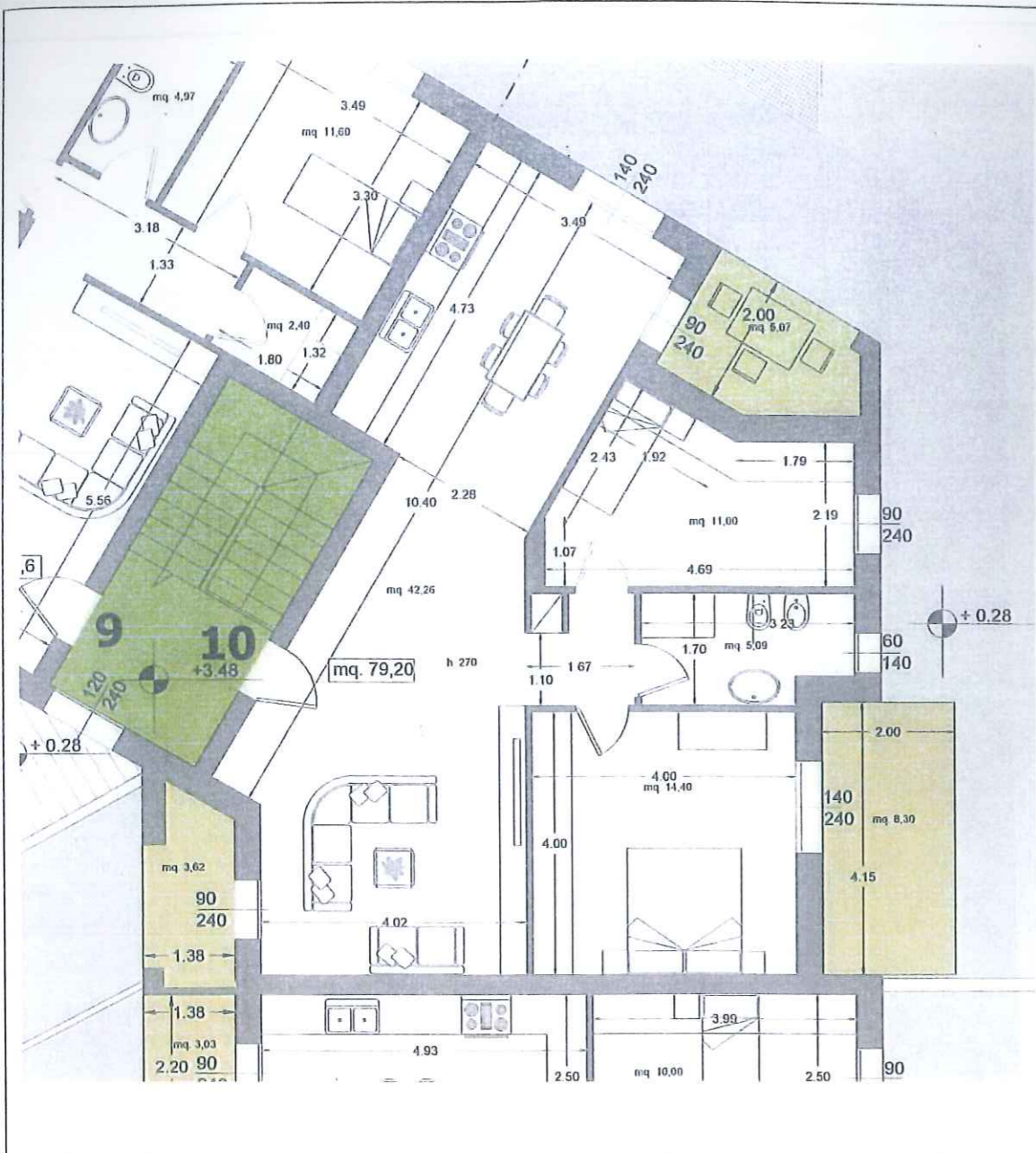


GARAGE 12 e CANTINA C12

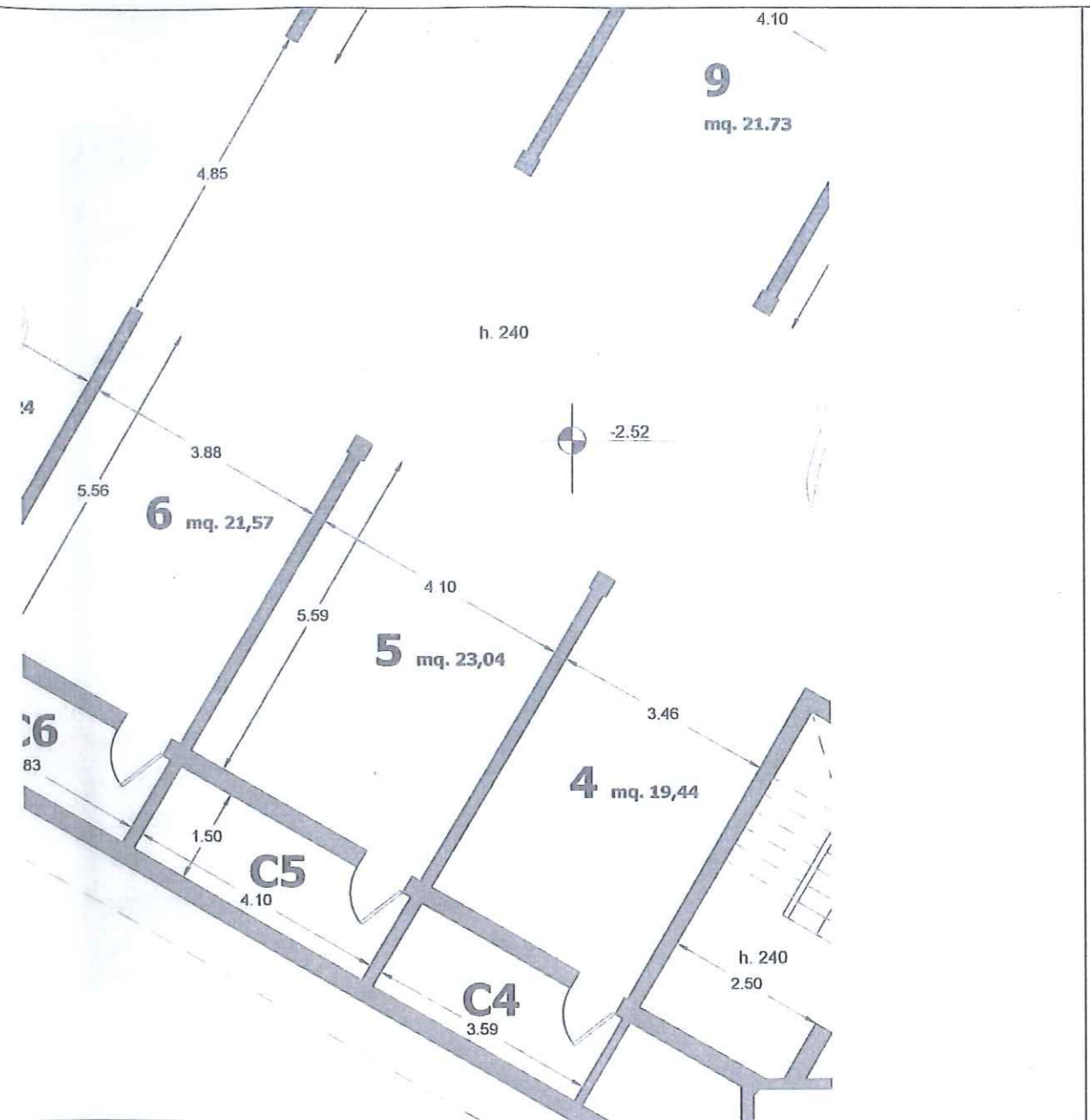


Superficie netta appartamento	64,42 mq
Logge	4,53 mq
Garage 12	29,23 mq
Giardino	0 mq
Cantina 12	26,89 mq

APPARTAMENTO 10

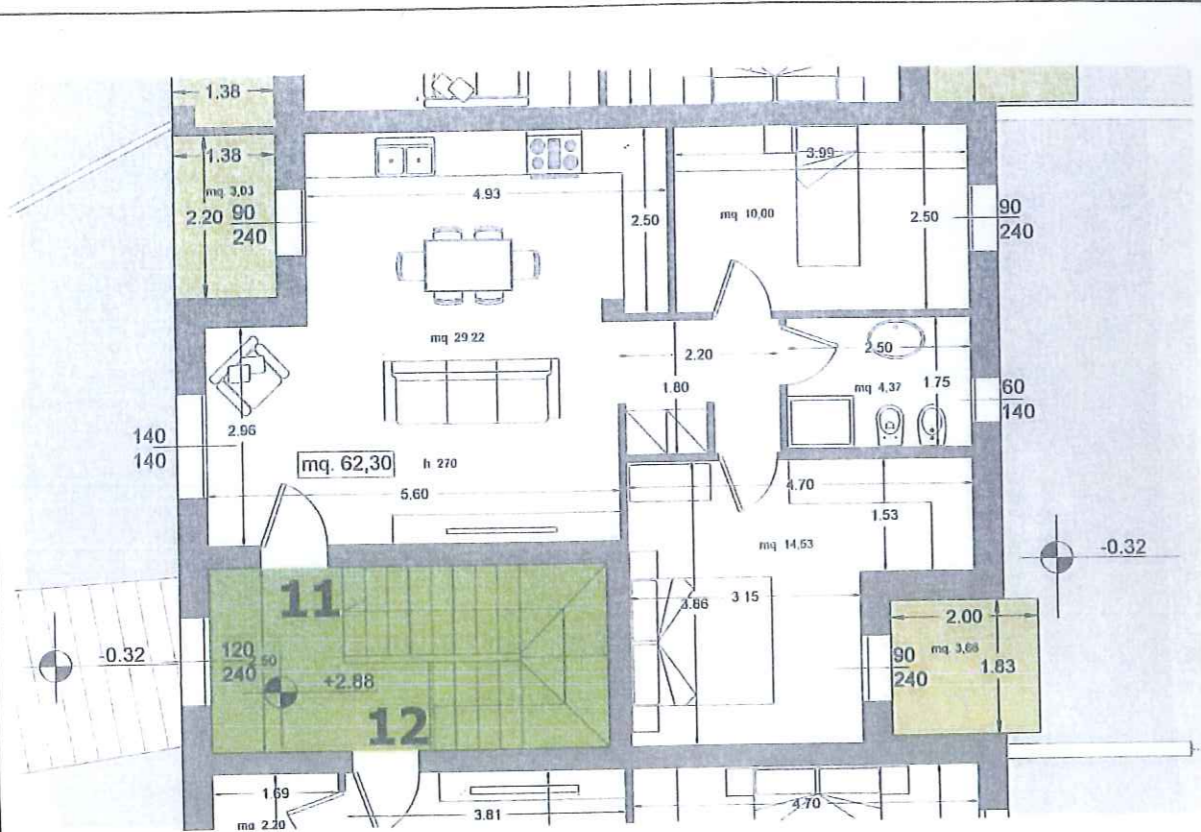


GARAGE 5 e CANTINA C5

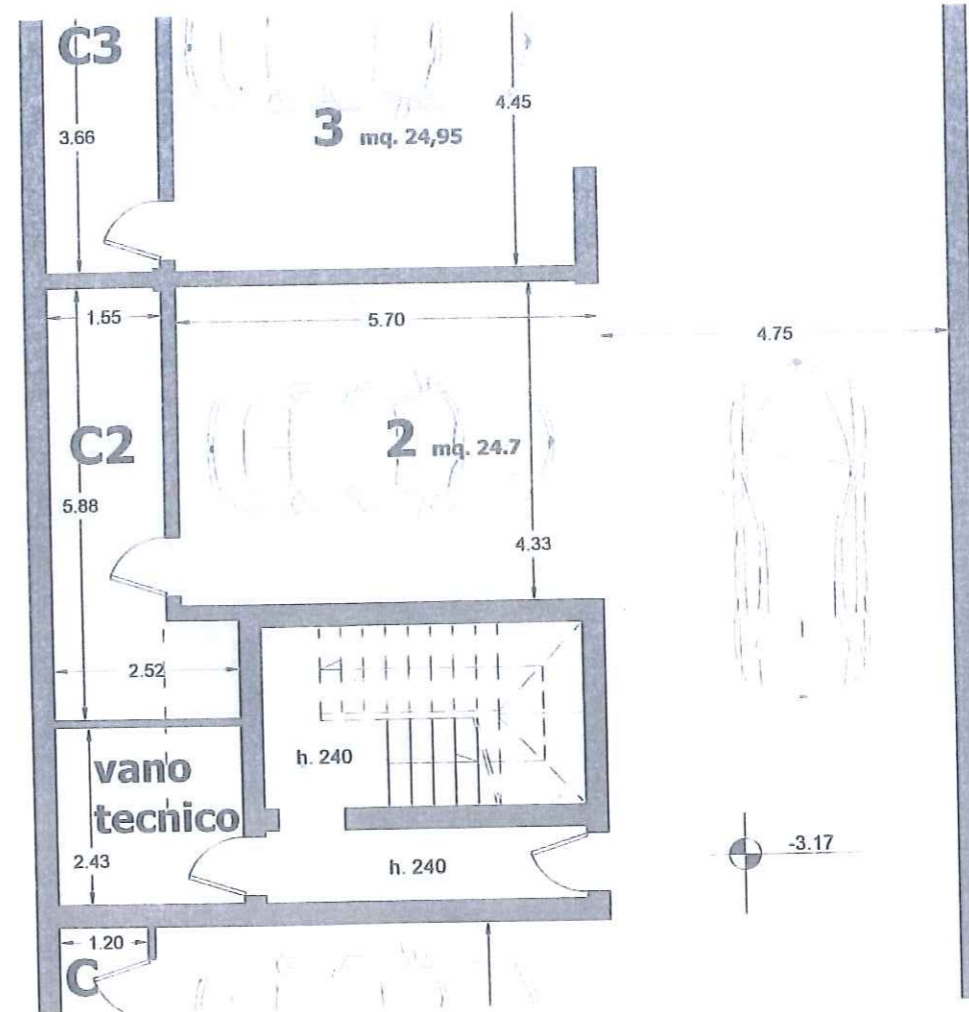


Superficie netta appartamento	79,20 mq
Logge	11,92 mq
Garage 5	23,04 mq
Giardino	0 mq
Cantina 5	6,15 mq

APPARTAMENTO 11

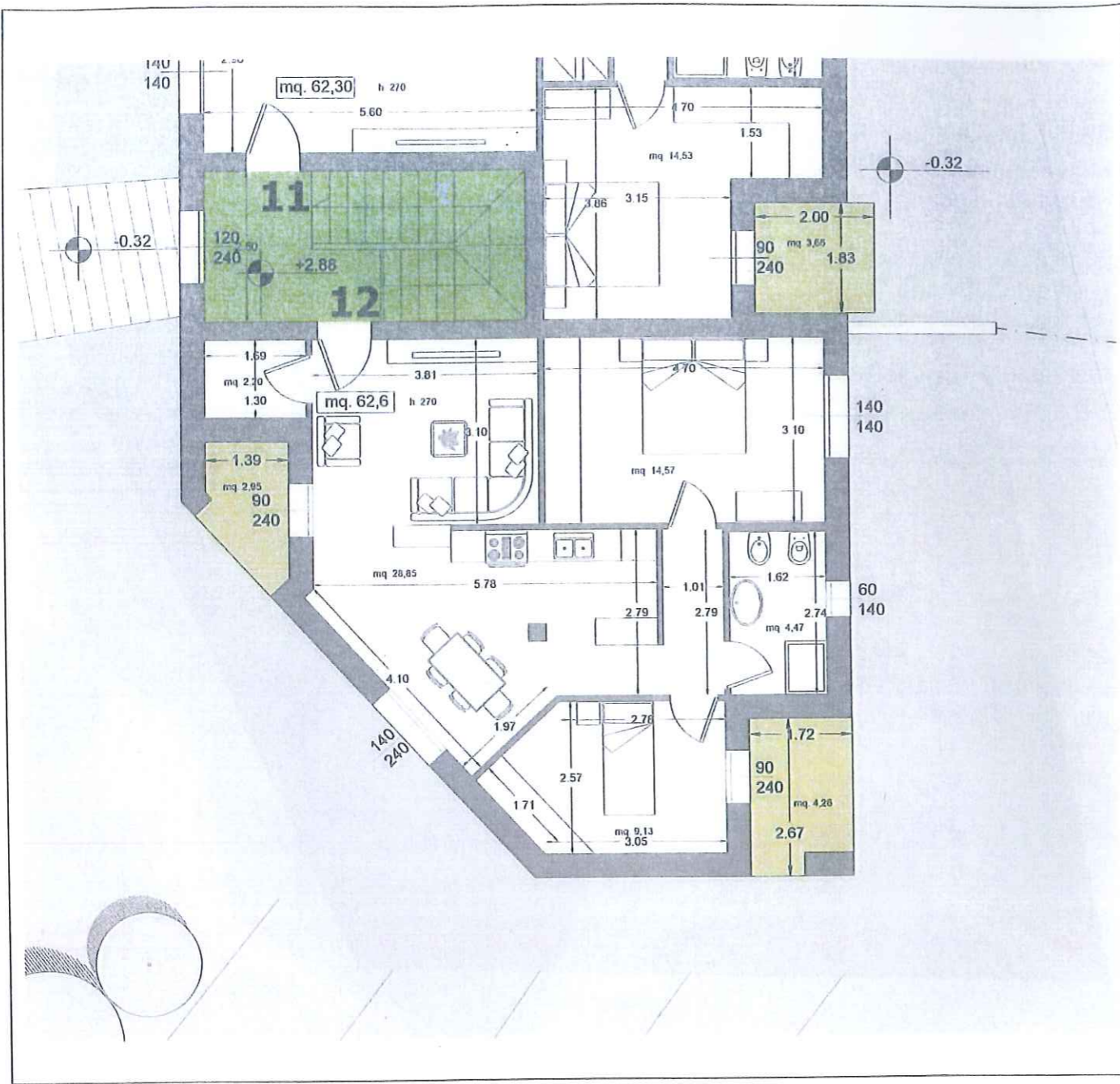


GARAGE 2 e CANTINA C2



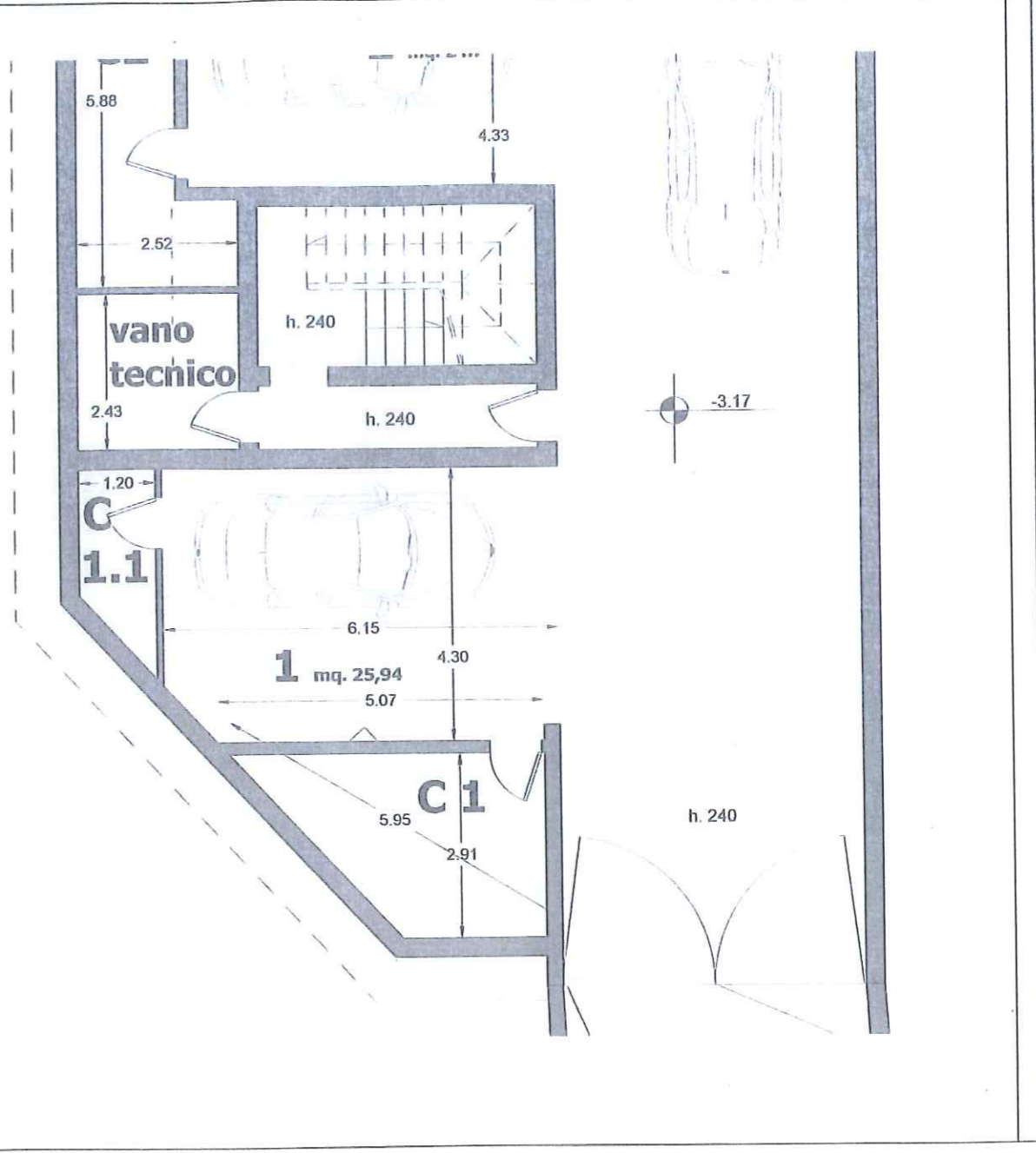
Superficie netta appartamento	62,30 mq
Logge	6,69 mq
Garage 5	24,70 mq
Giardino	0 mq
Cantina 5	10,42 mq

APPARTAMENTO 12



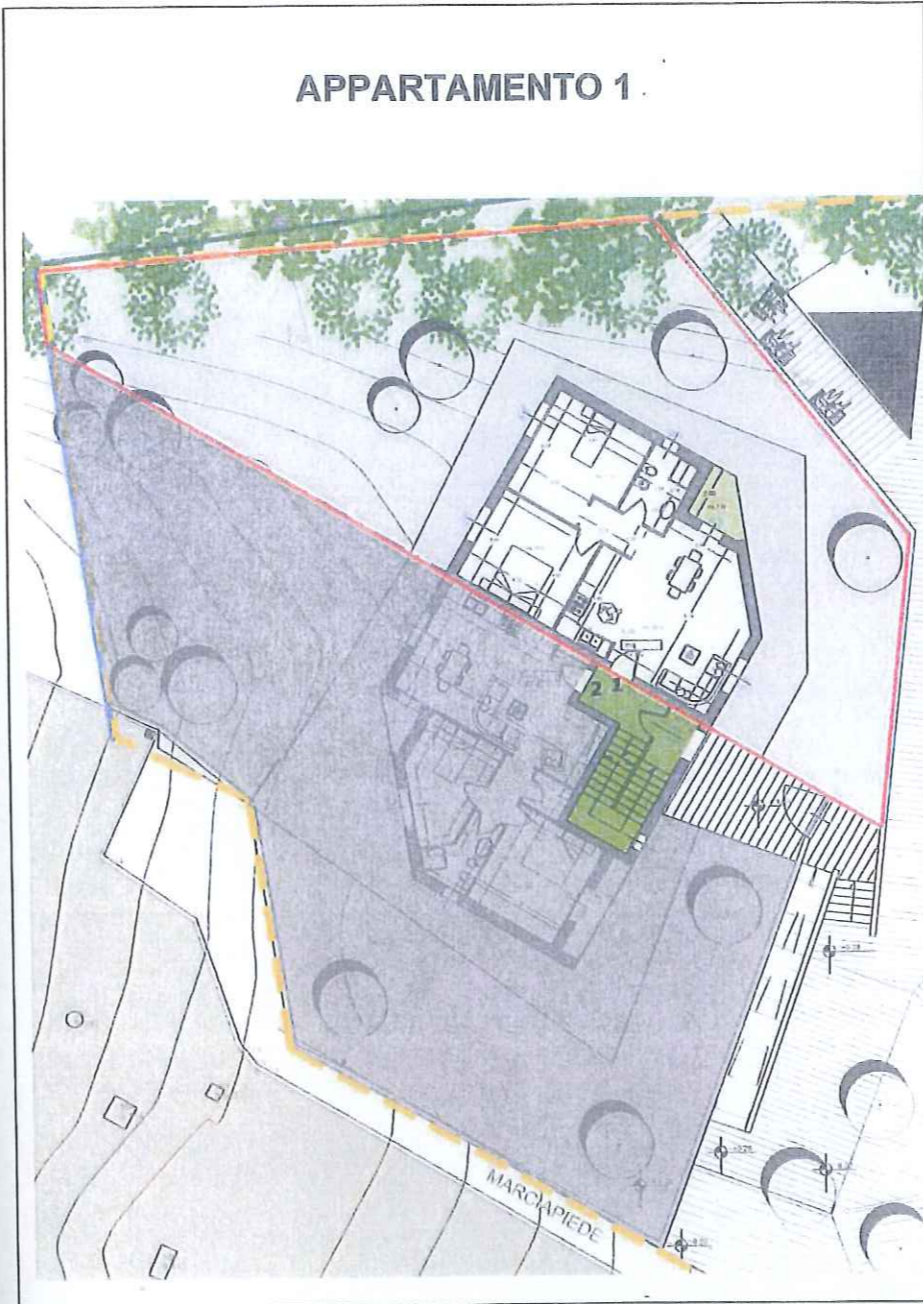
GARAGE 1

CANTINA C1 e C1.1



Superficie netta appartamento	62,60 mq
Logge	7,21 mq
Garage 1	23,60 mq
Giardino	0 mq
Cantina 1 - 1.1	18,91 mq

APPARTAMENTO 1.



APPARTAMENTO 6

